



Health Regions Webinar Series 2024

HSE and health service staff information and learning sessions

Health Regions Implementation Update, with a focus on Population Health 27th June 2024



Agenda

1. Introduction
2. Health Region Implementation Update
3. Overview of Population Health and
Population Based Planning
4. Population Profiles and Health Atlas
Ireland
5. Regional Perspective of Population
Based Planning
6. Next steps and close



Objectives

1. General update on rollout of Health Regions

- i. Health Regions Background & Context
- ii. Health Regions Progress to Date
- iii. HSE Centre & Health Regions Structures

2. Increase understanding of Population Based Planning

- i. What is 'Population Health' and improving it
- ii. Regional Population Profiles developed to support Population Based Planning
- iii. Regional insight on using Population Based Planning to address the needs of the region's population
- iv. Signpost to resources available to all staff to support local Population Based Planning



Health Regions Background & Context

Health Regions Vision



To deliver **person-centred** health and social care services that are **informed by the needs of the people and communities** in each region, better serving people at all stages throughout their lives



To **align** hospital- and community-based services in each region so that they can **work together** better and deliver joined-up, **co-ordinated care closer to home**



To **balance national standards** of care and direction with **local decision-making** to ensure people can access the **same quality of care** no matter where they live

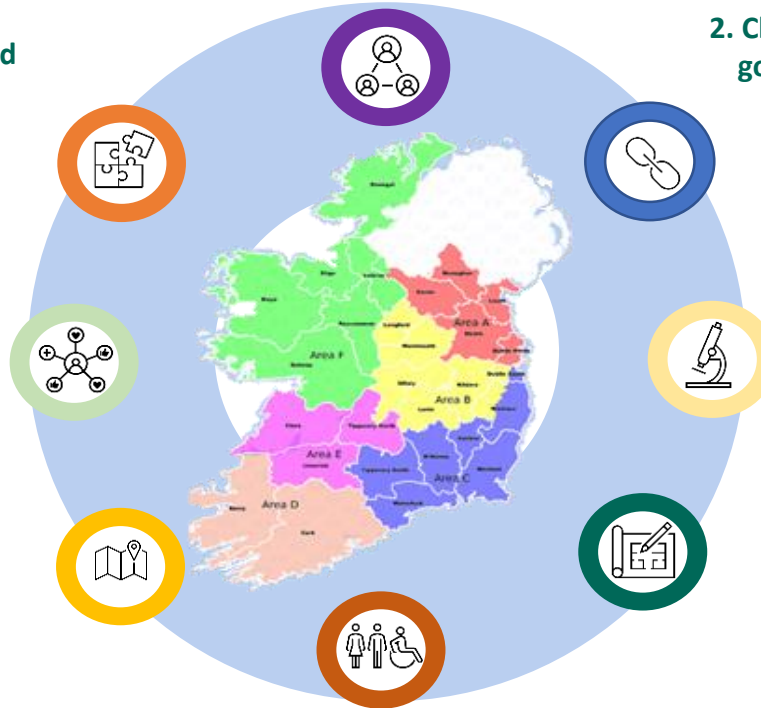
To **improve the health and well-being** of people in each region by ensuring that services are **planned around local needs**, people are **well-informed** and supported when accessing services, and resources are **fairly allocated and accounted for**



HE Health Regions Strategic Objectives

1. Align and integrate hospital-based and community-based services to deliver joined-up, integrated care closer to home

3. Support a population-based approach to service planning and delivery which aims to address health inequalities



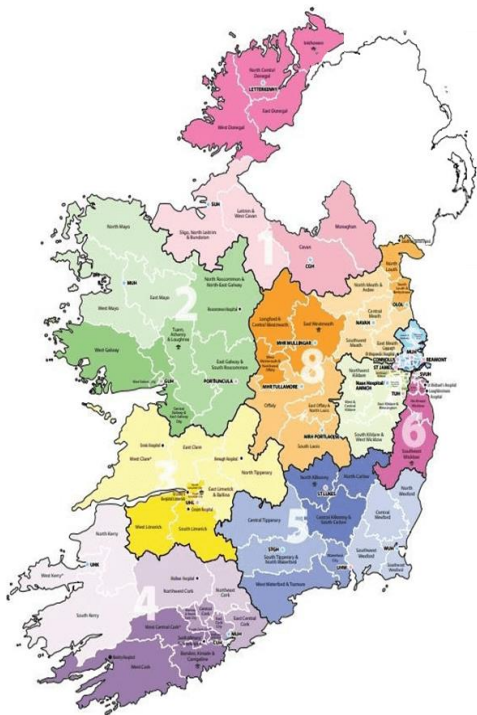
2. Clarify and strengthen corporate and clinical governance and accountability at all levels

4. Improve equitable regional investment and balance national consistency with appropriate local autonomy to maintain consistent quality of care across the country

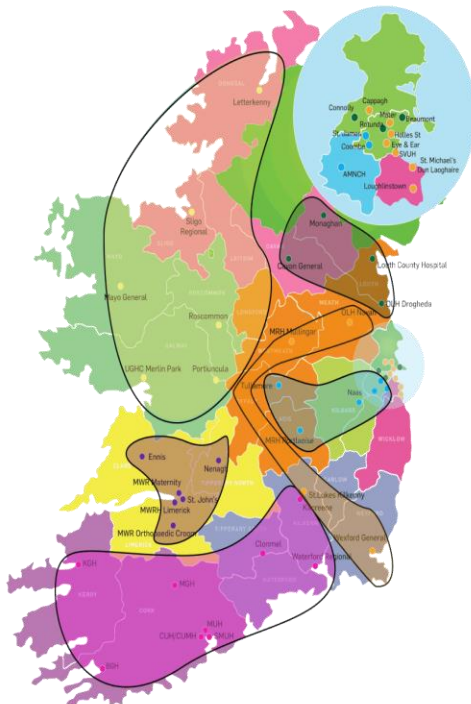
5. Run an efficient, highly productive, and transparent health and social care service with aligned incentives to provide people with timely access to safe, high-quality and integrated care.

CHOs and HGs to Health Regions

Community Health Organisations

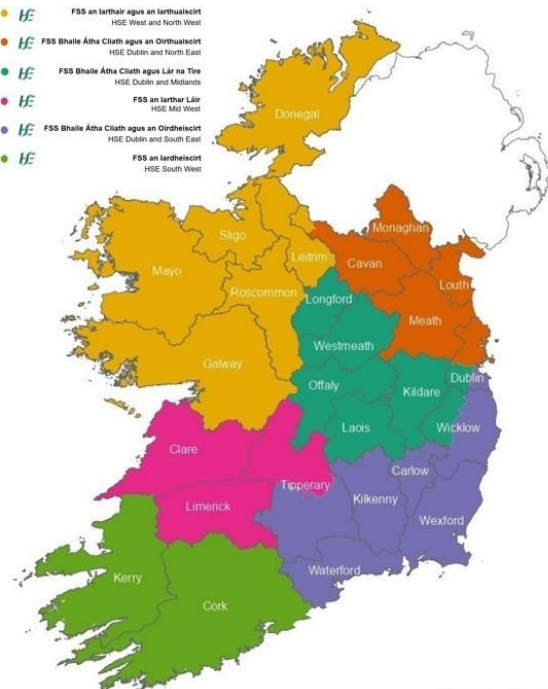


Hospital Groups



Health regions

-   FSS an Iarthair agus an Iarthuaiscirt
HSE West and North West
-   FSS Bhaile Átha Cliath agus an Oirthuaiscirt
HSE Dublin and North East
-   FSS Bhaile Átha Cliath agus Lár na Tíre
HSE Dublin and Midlands
-   FSS an Iarthair Láir
HSE Mid West
-   FSS Bhaile Átha Cliath agus an Oirthuaiscirt
HSE Dublin and South East
-   FSS an Iarthuaiscirt
HSE South West



What's Decided?

We will still be a single HSE organisation with 6 health regions. Services will be integrated across hospitals and community in these health regions. Health Regions are not separate statutory bodies.



Health Regions will use the HSE logo and be under the governance of the HSE Board

Regional Health Forum structure to remain but will be aligned to Health Regions

Following a transition period, the Health Region management structure will replace existing CHO and HG management structures

Operational focus to move from HSE Centre to the Health Regions and Integrated Healthcare Areas (IHAs). 20 IHAs have been agreed as geographic sub-components of the Health Regions. The IHAs will have responsibility for operational service delivery and driving integrated care for patients and service users.

HSE Centre will develop and oversee standards and guidelines for implementation at regional level. The focus of HSE Centre will be on planning, enabling, performance and assurance

The HSE Centre and Health Regions structures have been agreed

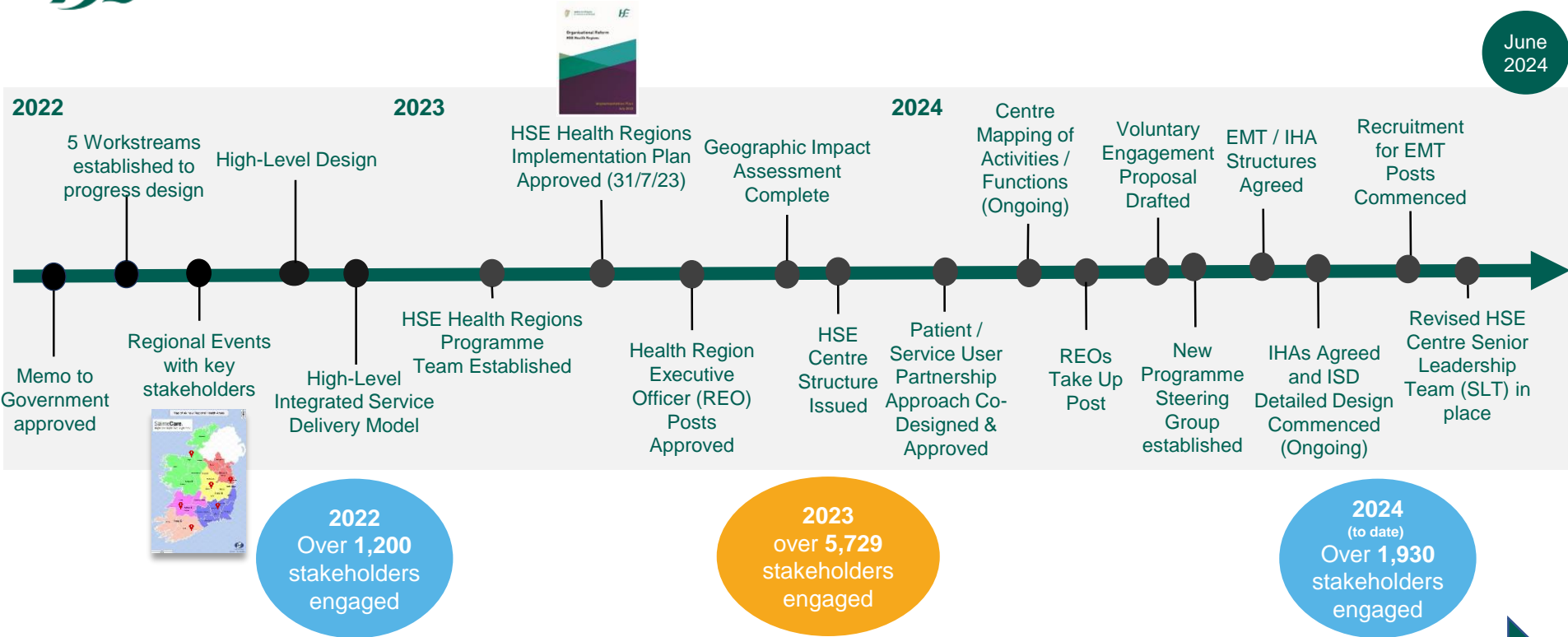


Health Regions Progress to Date



Health Regions Programme – Progress to Date

June
2024

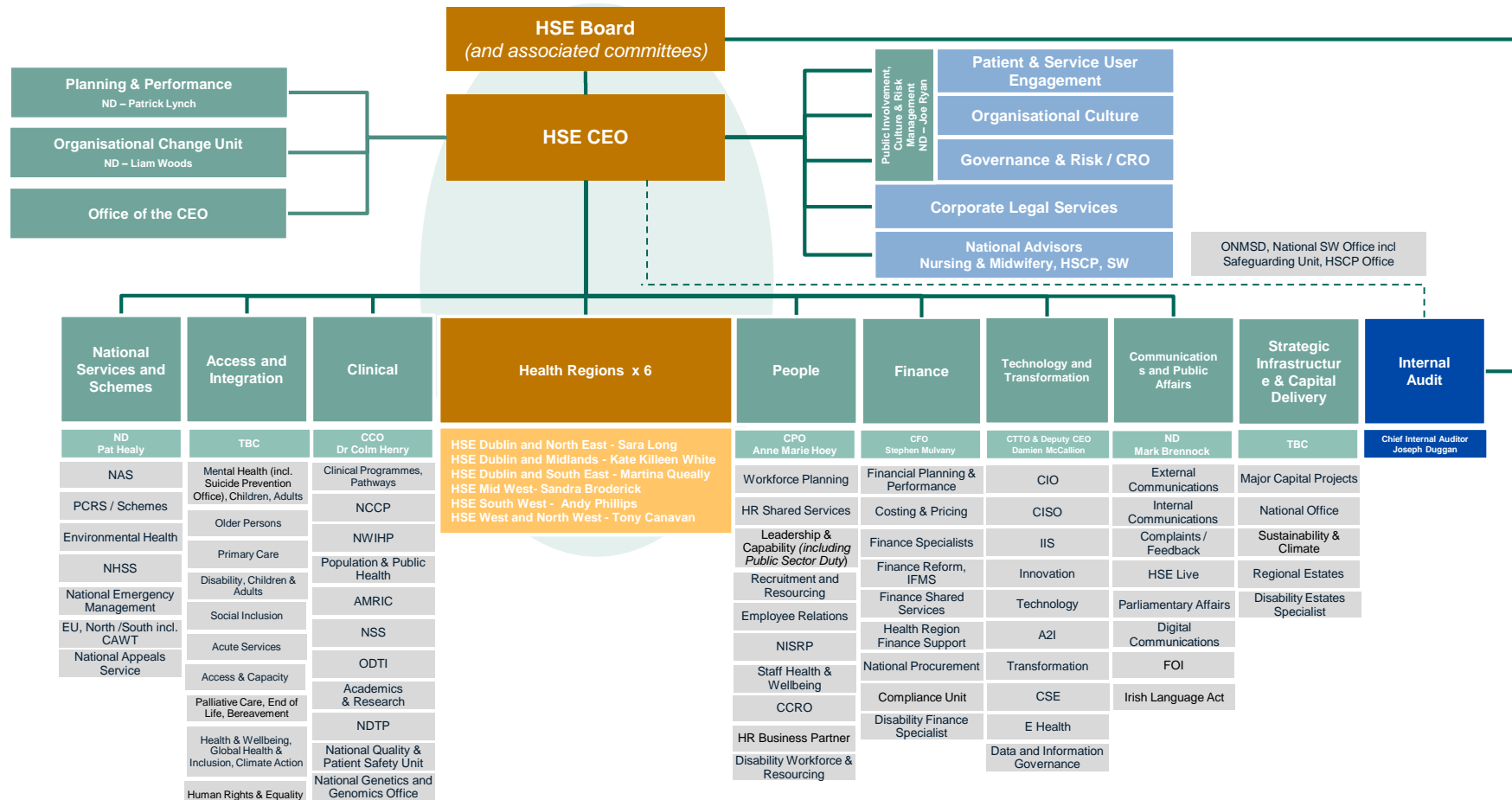


Ongoing Engagement with CHOs, Hospital Groups, Patient / Service User Representatives, HSE Centre Staff, Voluntary Organisations and more



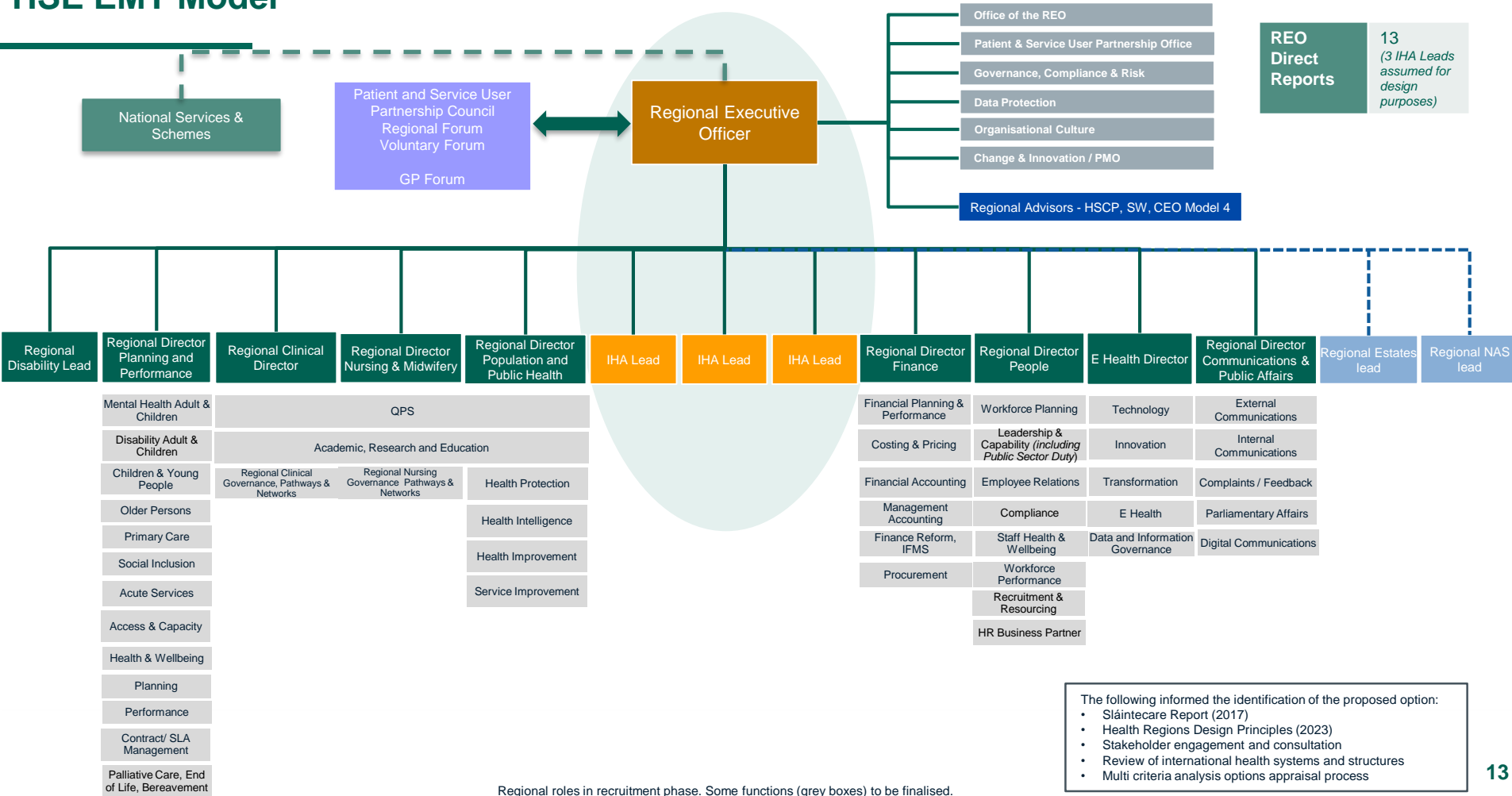
HSE Centre & Health Regions Structures

HSE Centre New Structure - with appointed NDs

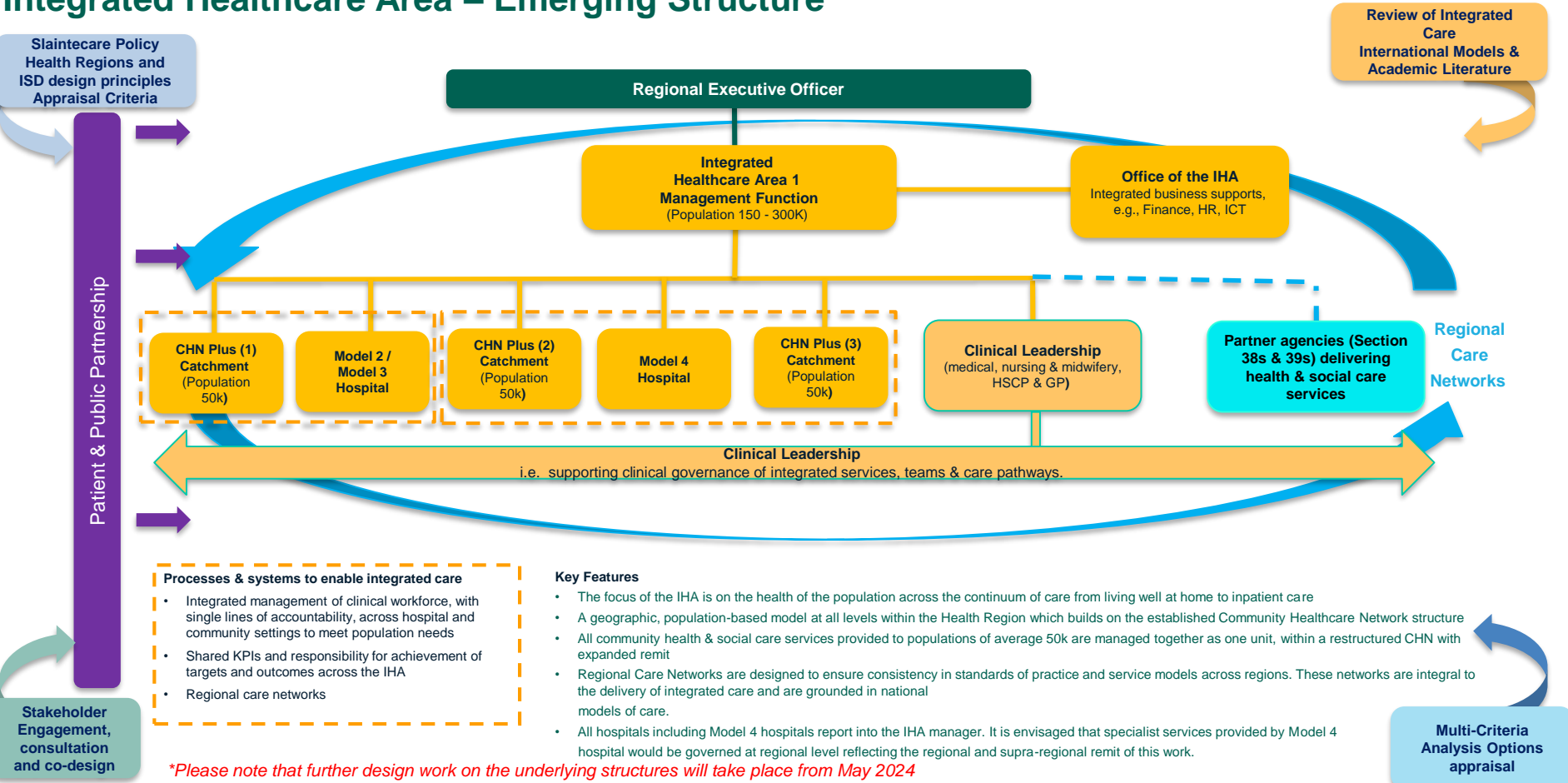


- ND post for Access & Integration and Strategic Infrastructure & Capital Delivery in recruitment phase. Grace Rothwell (Acute Operations), David Walsh (Community Operations) & Brian O'Connell (Head of Capital & Estates) attending SLT in interim until ND Access & Integration and Strategic Infrastructure & Capital Delivery positions filled.
- Some functions (grey boxes) to be finalised

HSE EMT Model



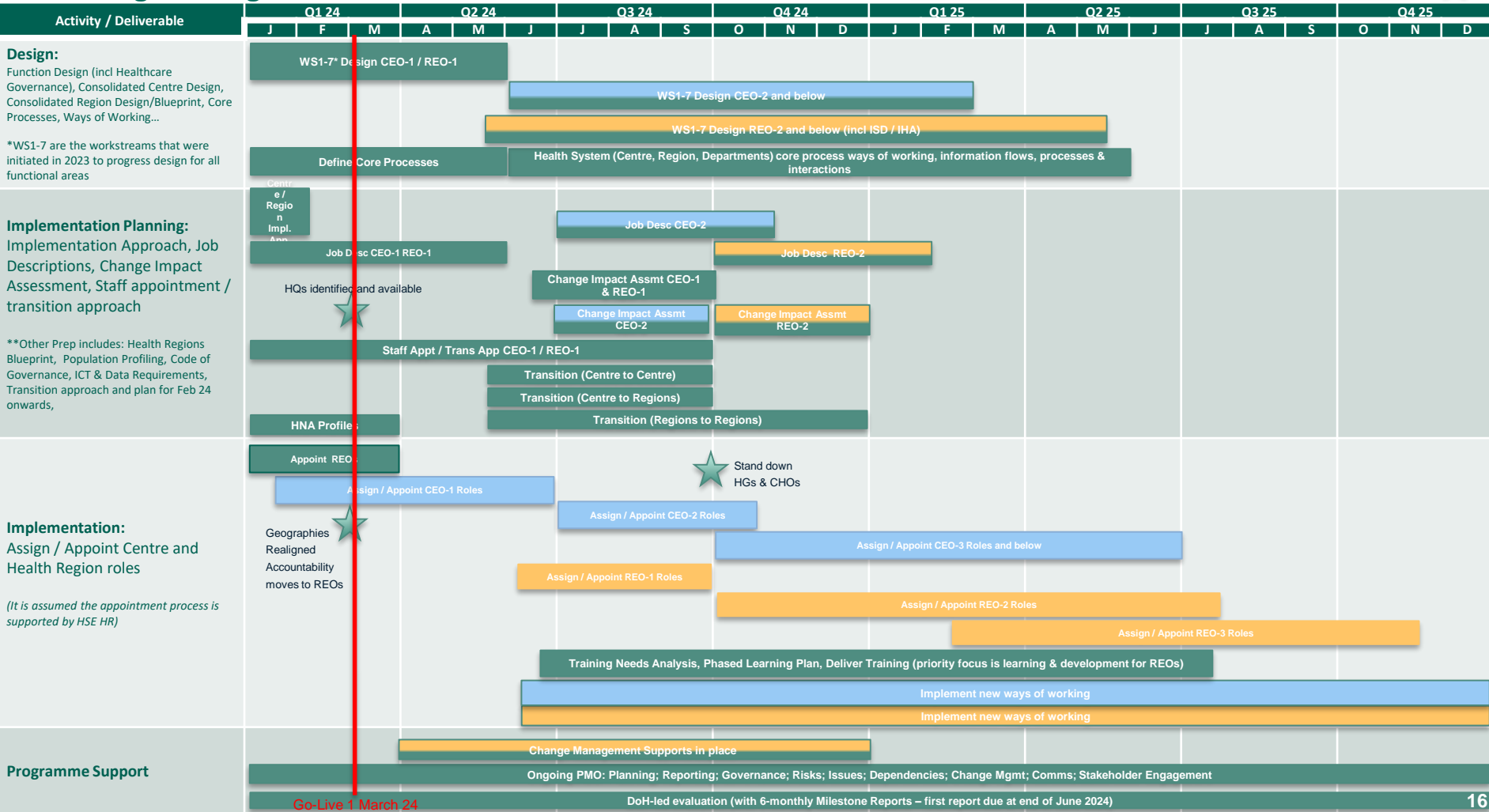
Integrated Healthcare Area – Emerging Structure





Health Regions Programme Next Steps

Health Regions High-Level Plan 2024/2025





#hello  name  ...

*Dr Jennifer Martin, Dr Declan McKeown, Dr Naomi Petty-Saphon
Public Health, HSE*

Population Health



Health

Health is a state of complete physical, mental and social well-being and not merely the absence of disease or infirmity (WHO)



Population Health

“Population health is a state of optimal physical, mental and social well-being within a community, where everyone has a fair opportunity to thrive”. Irish work in progress!



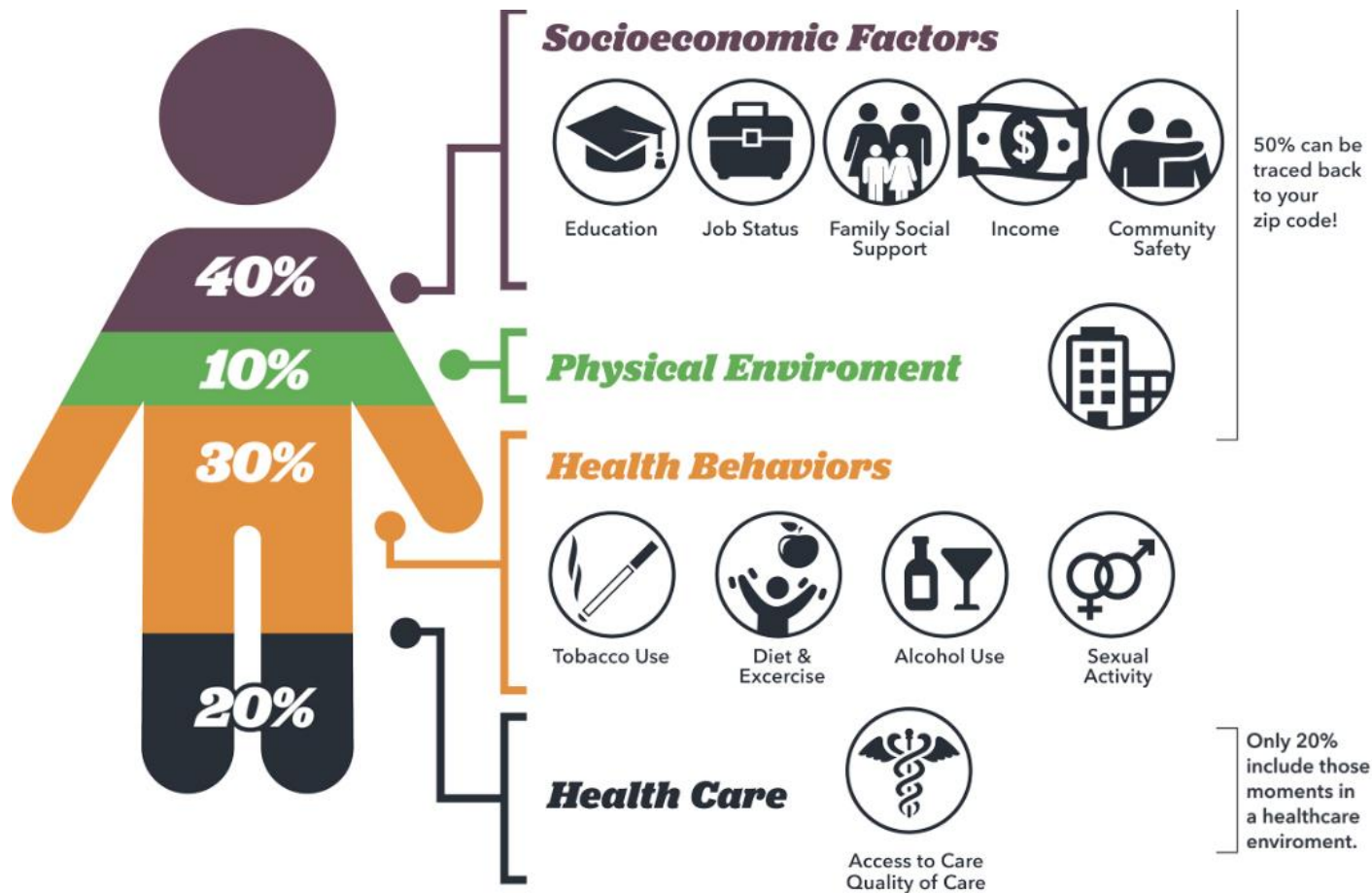








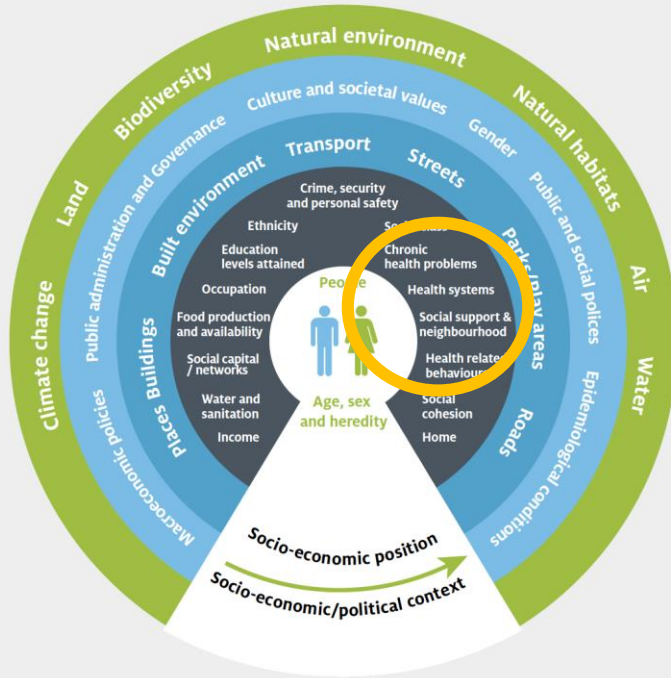




Determinants of Population Health

Determinants of Health

(Adapted from Dalghren and Whitehead, 1991 and Grant and Barton, 2006)



In Health and Social Care, we still have a huge opportunity to increase the impact we have

- By taking a **population health approach** to enhance how we work
- By partnering with communities and sectors outside of health care to **extend our reach**



Population Health Approach

The approach takes the perspective of:



A Population

The approach incorporates a focus on:



**Prevention
Equity
Determinants of Health
Sustainability**

The approach is underpinned by:



**Partnership & Engagement
Evidence & Measurement
An Integrated, Coordinated, Systems-Based Lens
Continuous Learning and Improvement**



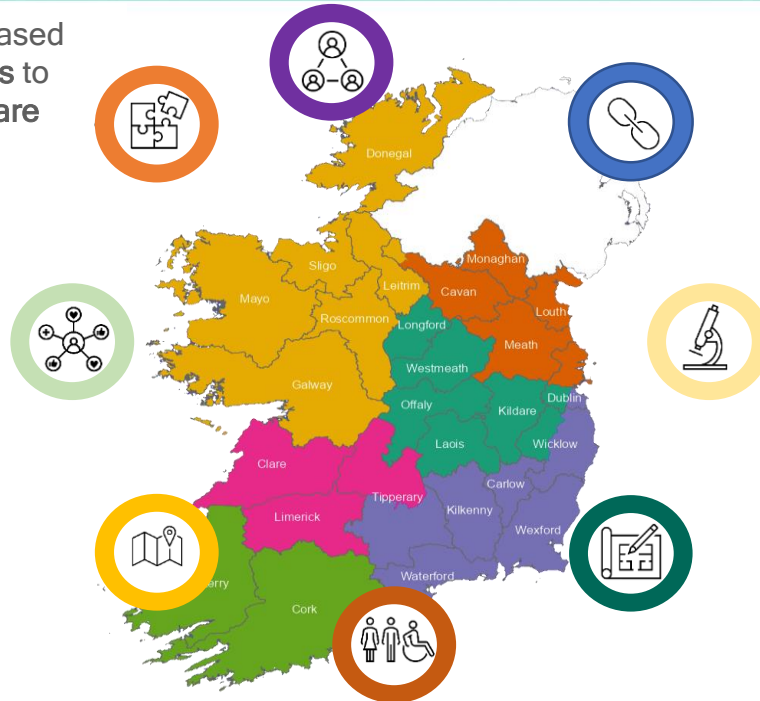
Improving Population
Health through Population
Based Planning



Health Regions – Strategic Objectives

1. Align and **integrate** hospital-based and community-based **services** to **deliver joined-up, integrated care** closer to home

3. Support a **population-based approach** to service planning and delivery which aims to address **health inequalities**



2. Clarify and strengthen **corporate and clinical governance** and accountability at all levels

4. Balance regional investment, underpinned by local decision-making, supported by **national standards** of care and direction

5. Run an **efficient**, highly productive, and transparent health and social care service with aligned incentives to provide people with **timely access to safe, high-quality, integrated care**

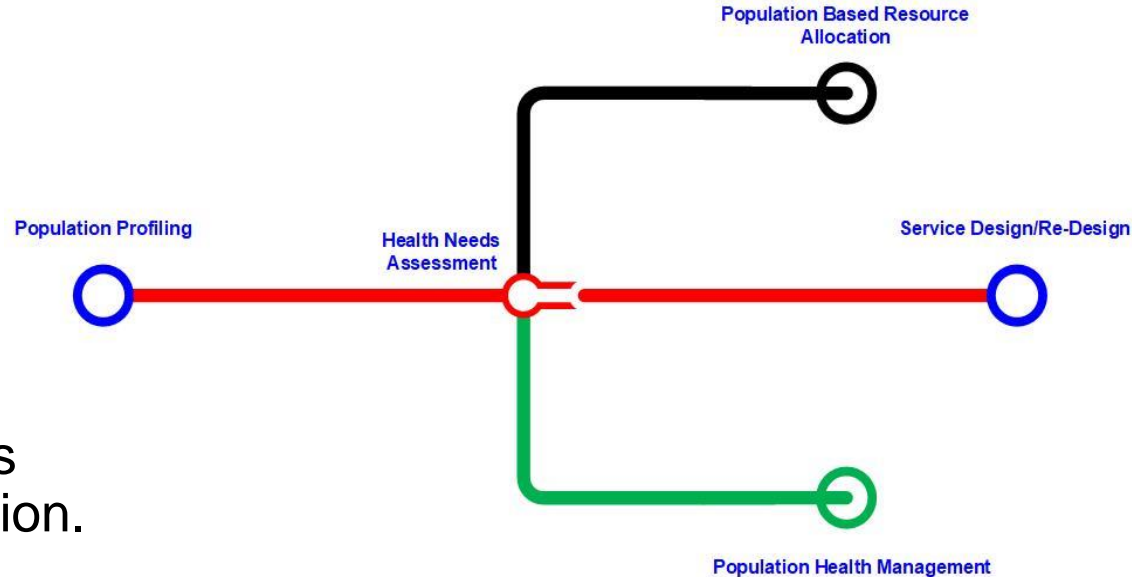


Population Based (approach to) Planning

A cohesive, integrated and comprehensive approach to the assessment of health needs at national, regional or local level

to support decision makers in service prioritisation, planning, resource allocation

that are orientated to the needs and preferences of the population.





Population Profiles



Progress to date

HSE Population Based Planning Workshop Report 24th October 2023



Workshop report by:
PBP Working Group, Public Health



Regional Population Profile

Health Region: Dublin and North East



March 2024



Regional Population Profiles

National Comparative Report



April 2024

Population profiling maps

The population profiling maps available in this section for Community Healthcare Networks (CHNs) are derived from Health Atlas Finder.

All of the maps contained here can be viewed in higher definition and can be overlaid with boundaries and services in the [Health Atlas Finder](#).

In addition, users can view maps at smaller geographies, e.g. Primary Care Team (PCT, around 10,000 people), Electoral Division (ED, around 1,000 people) and CSO Small Area (SA, around 200 people). This gives a much more granular and local view of the population.

In addition to mapping, Health Atlas Finder also provides tables of 96 Census variables (from CSO), tables of health behaviour estimates (from Healthy Ireland) and tables of self-reported morbidity, or illness (from TILDA).

The following regional breakdown of CHN profiling maps is being provided in conjunction with the HSE's Population-Based Profiling programme.

HEALTH REGION: DUBLIN AND NORTH EAST	+
HEALTH REGION: DUBLIN AND MIDLANDS	+
HEALTH REGION: DUBLIN AND SOUTH EAST	+
HEALTH REGION: SOUTH WEST	+
HEALTH REGION: MIDWEST	+
HEALTH REGION: WEST AND NORTH WEST	+

PBP Workshop
PH Project
Established

2023

Regional Population Profiles: Chapter 1
National Comparative Population Profile
Published on Dedicated Webpage
Evaluation

January – April 2024

Wider HSE Governance
Structures being stood up

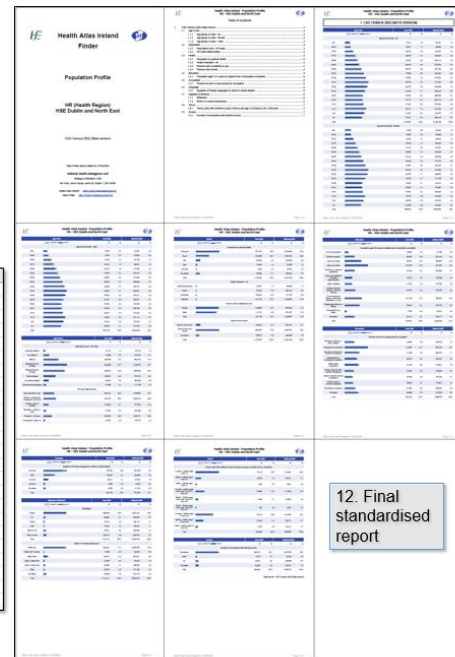


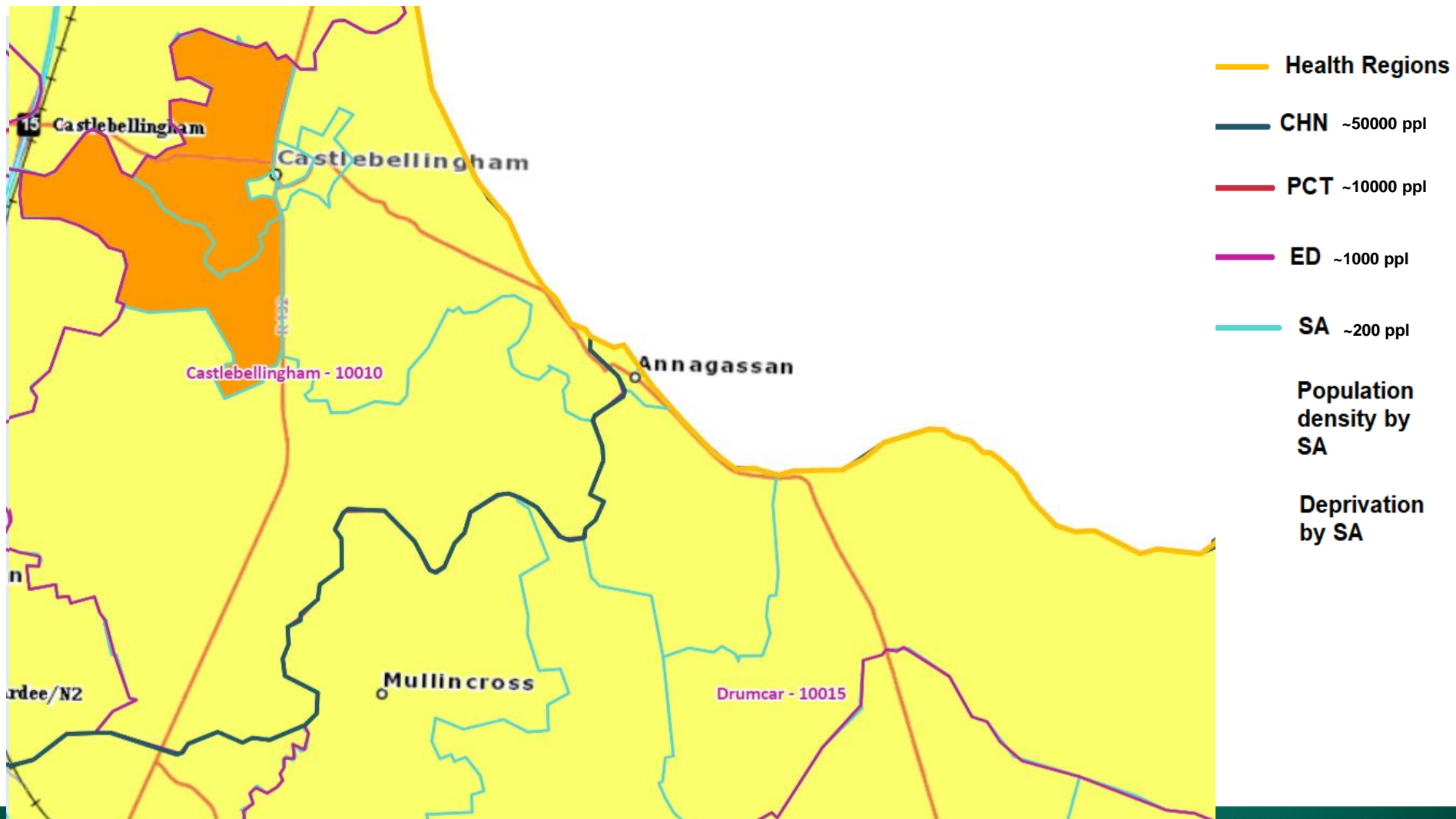
Profile Development: Collaborative Approach

- PBP Profile Subgroup
 - Representation from 6 regions and 2 national teams
 - Virtual meetings and in person co-design workshop
- Shared decision making on standardised Population Profile
 - Consensus on 'critical few' census measures
 - Collective input on standardised format and design
- Local adaptation
 - Initial feedback from COs, Ops leads, GP Leads
 - Local interpretation and context on public health implications




12. Final standardised report







Profiles Landing Page

[Health and Wellbeing](#)

How can we help you?

HSE Talking Health and Wellbeing Podcast

About Us

Our Priority Programmes

Healthy Ireland

Exercise Videos

More

[HSE.ie](#) > [Health and Wellbeing](#) > Knowledge Management

Health Population Profiles

The HSE is organised into six Health Regions, each region providing health and social care services for people in the area.

Regional Population Profiles for the six Health Regions provide an 'At a Glance' insight and understanding of the key demographic features of our population which will inform and support the planning of our health services. The profiles provide an overview of each Health Region and the Community Healthcare Networks (CHNs) within the Region, including maps and selected demographics for each CHN.

In addition, population profiling maps are provided for Community Healthcare Networks (CHNs). These and the regional maps are derived from Health Atlas Finder.

All of the maps contained here can be viewed in higher definition and can be overlaid with boundaries and services in the [Health Atlas Finder](#).

In addition, users can view maps in Health Atlas Finder at smaller geographies, e.g. Primary Care Team (PCT, around 10,000 people), Electoral Division (ED, around 1,000 people) and CSO Small Area (SA, around 200 people). This gives a much more granular and local view of the population.

As well as mapping, Health Atlas Finder also provides tables of 96 Census variables (from CSO), tables of health behaviour estimates (from Healthy Ireland) and tables of self-reported morbidity, or illness (from TILDA).



HEALTH REGION: DUBLIN AND NORTH EAST	+
HEALTH REGION: DUBLIN AND MIDLANDS	+
HEALTH REGION: DUBLIN AND SOUTH EAST	+
HEALTH REGION: SOUTH WEST	+
HEALTH REGION: MIDWEST	+
HEALTH REGION: WEST AND NORTH WEST	+

HEALTH REGION: DUBLIN AND NORTH EAST


DUBLIN AND NORTH EAST REGION POPULATION PROFILE

- [Balbriggan Area Network](#)
- [Ballymun Area Network](#)
- [Blakestown Area Network](#)
- [Blanchardstown Area Network](#)
- [Cabra Area Network](#)
- [Cavan](#)
- [Central Meath](#)
- [Connart Area Network](#)
- [Coastal Area Network](#)
- [Coolock Area Network](#)
- [East Meath](#)
- [Finglas Area Network](#)
- [Kilbarrack Area Network](#)
- [Monaghan](#)
- [North Inner City Area Network](#)
- [North Louth](#)
- [North Meath and Ardee](#)
- [South Louth and Bellewstown](#)
- [Southwest Meath](#)
- [Swords Area Network](#)


Related Files




[HR-DUBLIN-AND-NORTH-EAST-PROFILE-CENSUS-2022](#)
Format:PDF | File Size:2.04MB




[HR-DUBLIN-AND-NORTH-EAST-MAP-REGION-CENSUS-2022](#)
Format:PNG | File Size:1.21MB




[HR-DUBLIN-AND-NORTH-EAST-MAP-REGION-DEPRIVATION-CENSUS-2022](#)
Format:PNG | File Size:1.77MB




[HR-DUBLIN-AND-NORTH-EAST-MAP-REGION-POPULATION-DENSITY-CENSUS-2022](#)
Format:PNG | File Size:1.8MB



[HR-DUBLIN-AND-NORTH-EAST-MAP-ZOOM-TO-CAPITAL-CENSUS-2022](#)
Format:PNG | File Size:575KB



[HR-DUBLIN-AND-NORTH-EAST-MAP-ZOOM-TO-CAPITAL-DEPRIVATION-CENSUS-2022](#)
Format:PNG | File Size:851KB



[HR-DUBLIN-AND-NORTH-EAST-MAP-ZOOM-TO-CAPITAL-POPULATION-DENSITY-CENSUS-2022](#)
Format:PNG | File Size:880KB



Profiles Landing Page

HEALTH REGION: DUBLIN AND NORTH EAST

[DUBLIN AND NORTH EAST REGION POPULATION PROFILE](#)

[Bairbreogan Area Network](#)

[Ballymun Area Network](#)

[Blakesdown Area Network](#)

[Blanchardstown Area Network](#)

[Cabra Area Network](#)

[Cavan](#)

[Central Meath](#)

[Clonsilla Area Network](#)

[Coastal Area Network](#)

[Coolock Area Network](#)

[East Meath](#)

[Finglas Area Network](#)

[Kilbarrack Area Network](#)

[Monaghan](#)

[North Inner City Area Network](#)

[North Louth](#)

[North Meath and Ardee](#)

[South Louth and Belljystown](#)

[Southwest Meath](#)

[Swords Area Network](#)

Related Files



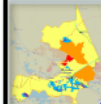
[CHN-BLANCHARDSTOWN-AREA-NETWORK-PROFILE-CENSUS-2022](#)

Format:PDF | File Size:97KB



[CHN-BLANCHARDSTOWN-AREA-NETWORK-CENSUS-2022](#)

Format:PNG | File Size:419KB



[CHN-BLANCHARDSTOWN-AREA-NETWORK-DEPRIVATION-CENSUS-2022](#)

Format:PNG | File Size:453KB



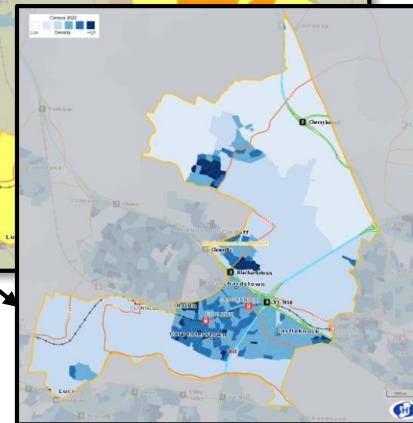
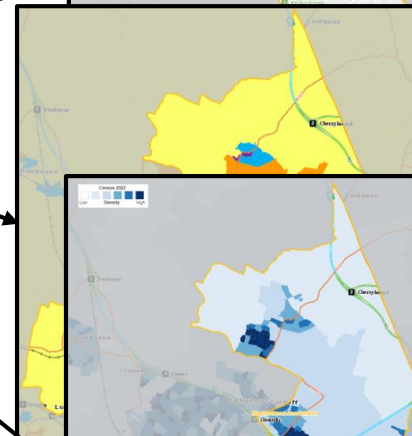
[CHN-BLANCHARDSTOWN-AREA-NETWORK-POPULATION-DENSITY-CENSUS-2022](#)

Format:PNG | File Size:489KB

Health Atlas Ireland

Finder

Population Profile





Profiles landing page (short URL):

<https://bit.ly/3QKH600>

Health Atlas Finder:

<https://finder.healthatlasireland.ie/>

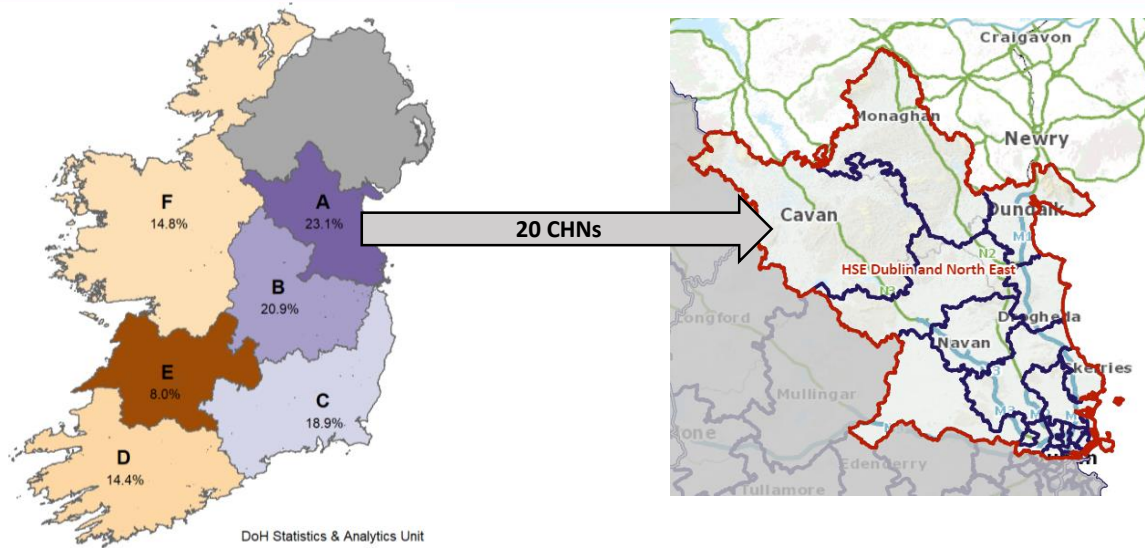




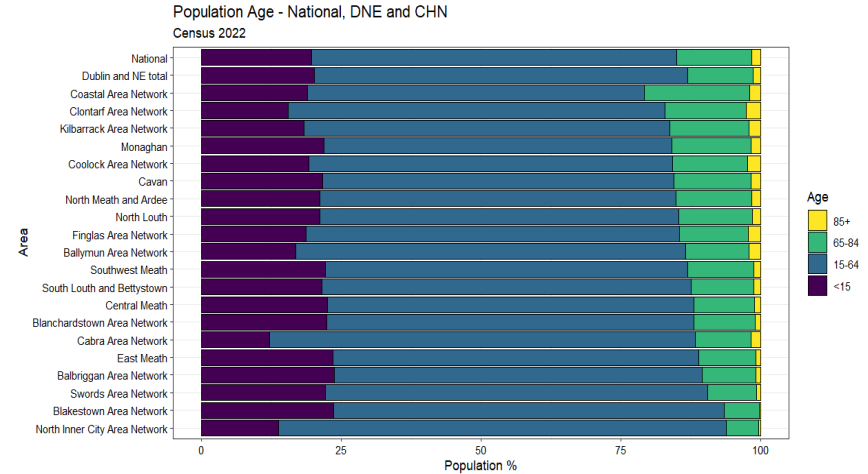
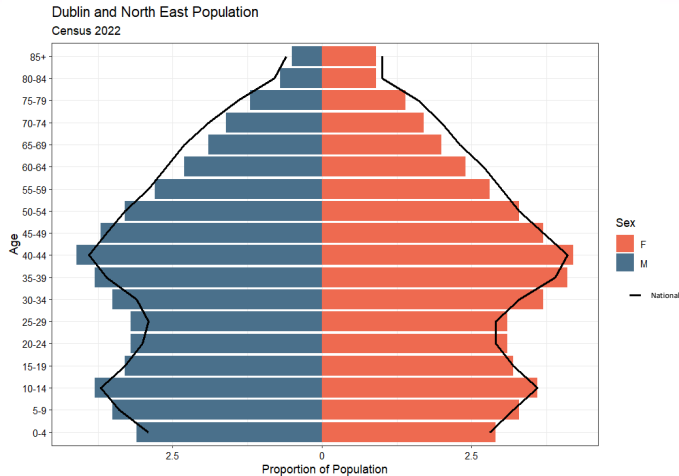
Regional Population Profile Dublin & North East



Regional Population Profile: HSE Dublin & North East



HSE Health Region	2022 Population	% of Total Pop
Dublin & North East (A)	1,187,082	23.1%
Dublin & Midlands(B)	1,077,639	20.9%
Dublin & South East (C)	971,093	18.9%
South West (D)	740,614	14.4%
Midwest (E)	413,059	8.0%
West & North West (F)	759,652	14.8%

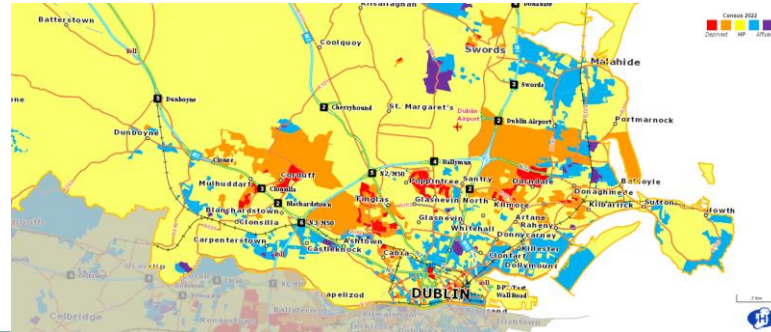
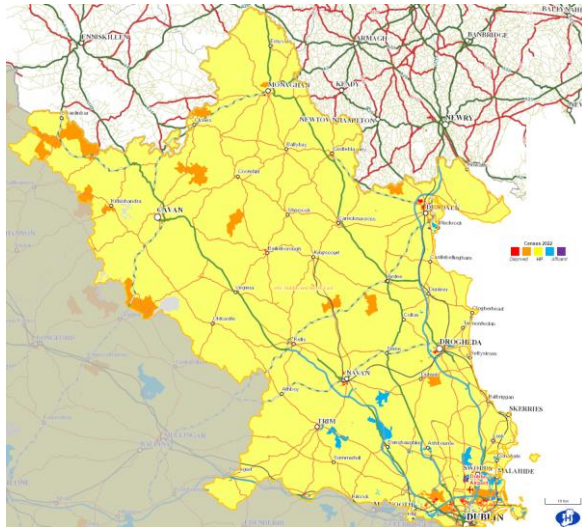


Population size and age structure are significant drivers of healthcare need

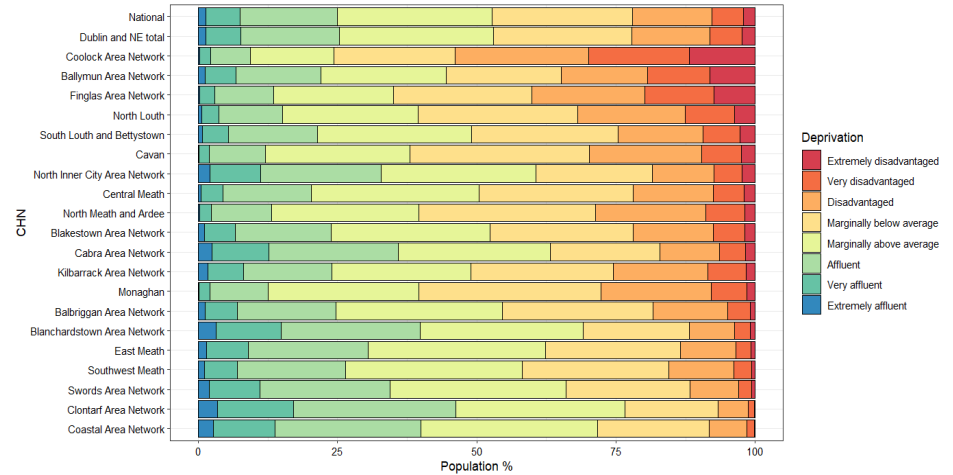
- DNE is younger than the national average
 - Variation between CHNs, differing healthcare needs
 - Eight CHNs have larger proportion of population aged 85+ years than the national average
 - More than half of CHNs have a younger population (0-14 years) than the national average.

HF Deprivation

- Well-established social gradient in health
- Increased deprivation associated with poorer health outcomes, including lower life expectancy, development of long-term health conditions and mental illness.

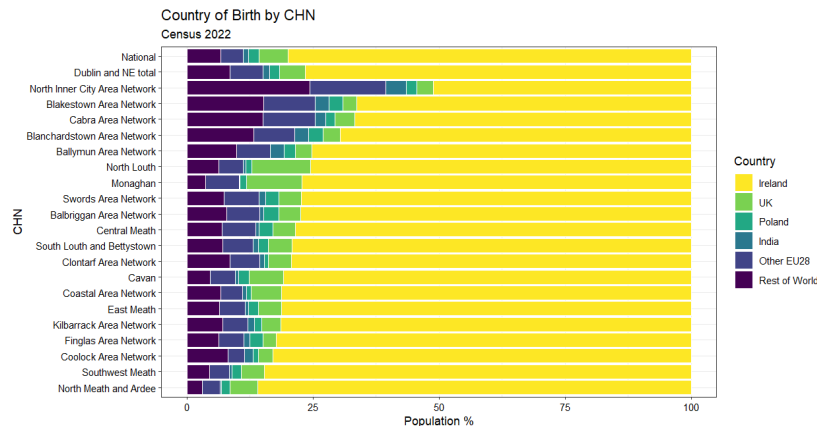
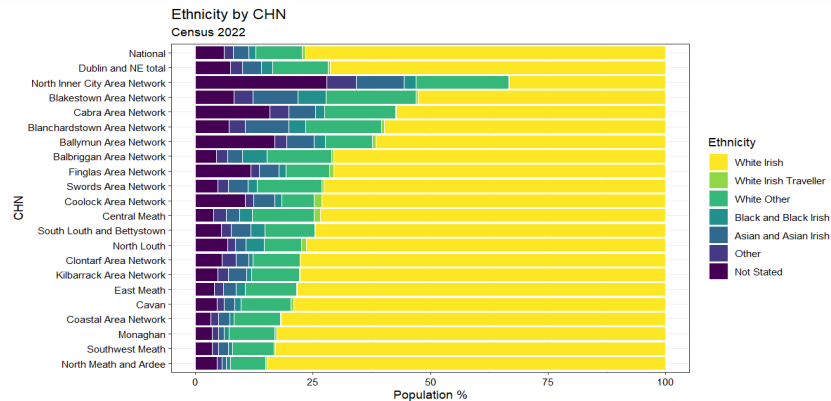


Deprivation Score - National, DNE and CHN
Census 2022



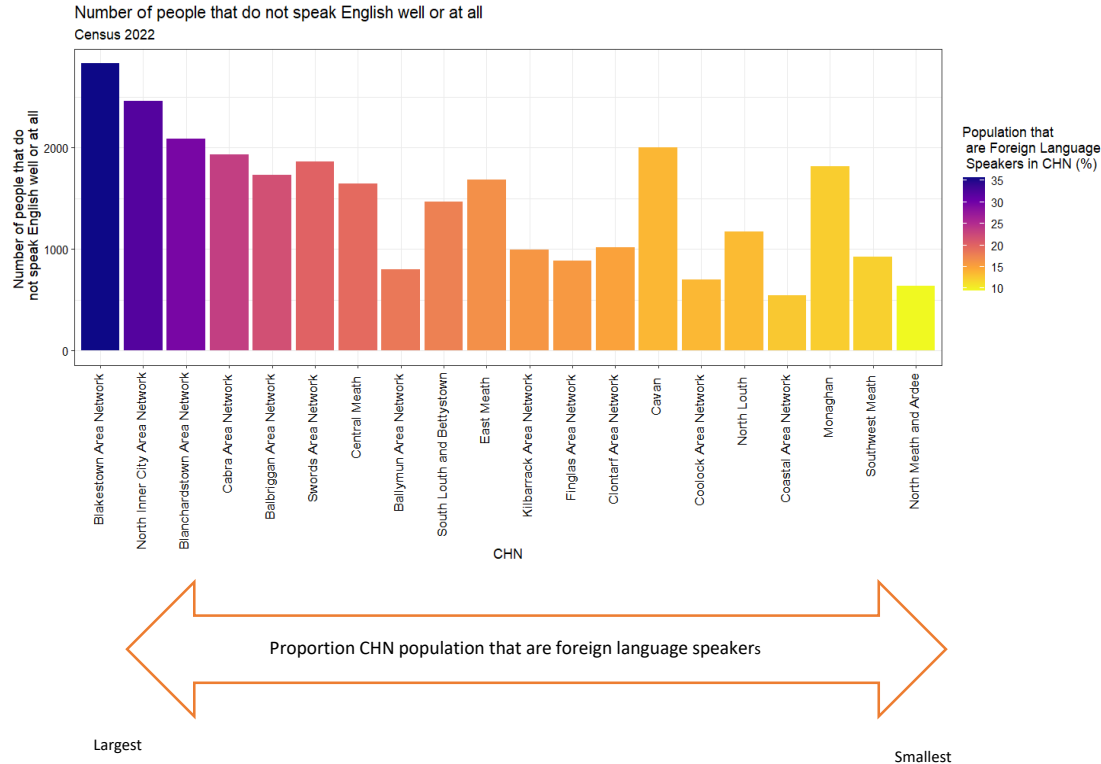


Ethnicity and country of birth



- Areas with higher levels of **migration** and **minority ethnic groups** may require specific interventions to ensure culturally appropriate services and information is available to the population
- Health **needs may differ** for different ethnic groups
- The DNE has a more **diverse** ethnic composition than the national average, and some CHNs within DNE have very high proportions of people born outside of Ireland and the UK

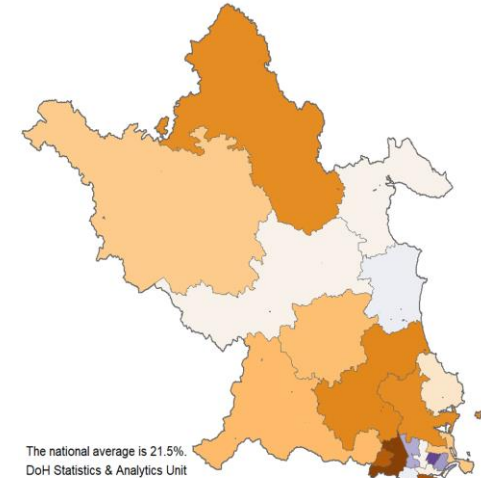
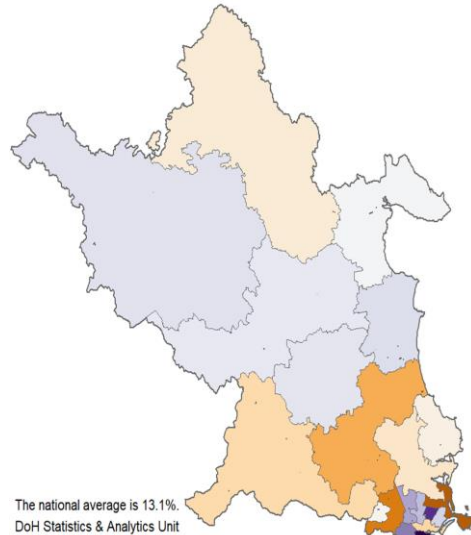
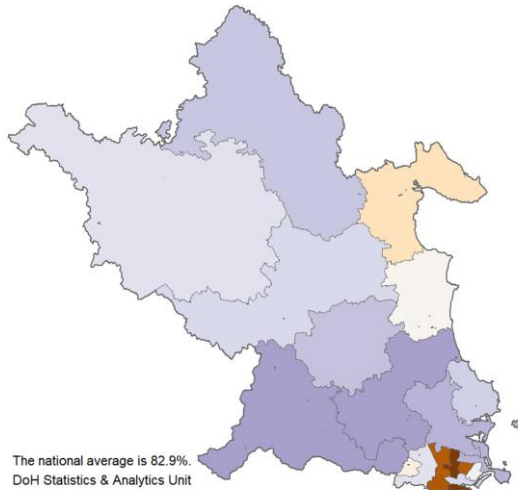
Language



- Language barriers can contribute to health inequalities
- Health communication and messaging needs to be tailored to the population so it can be understood and impactful
- Healthcare in CHNs in the DNE may require different levels of translation services and supports

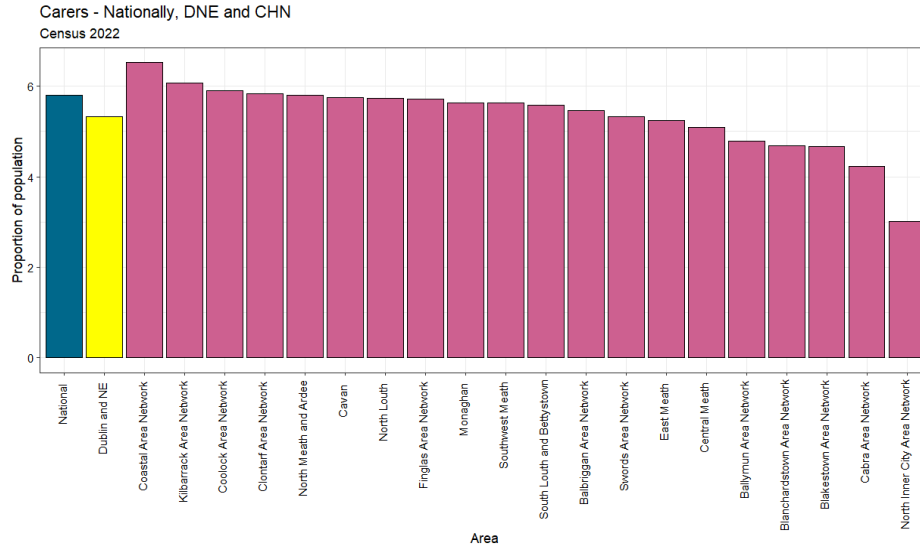


General Health – Smoking – Disability

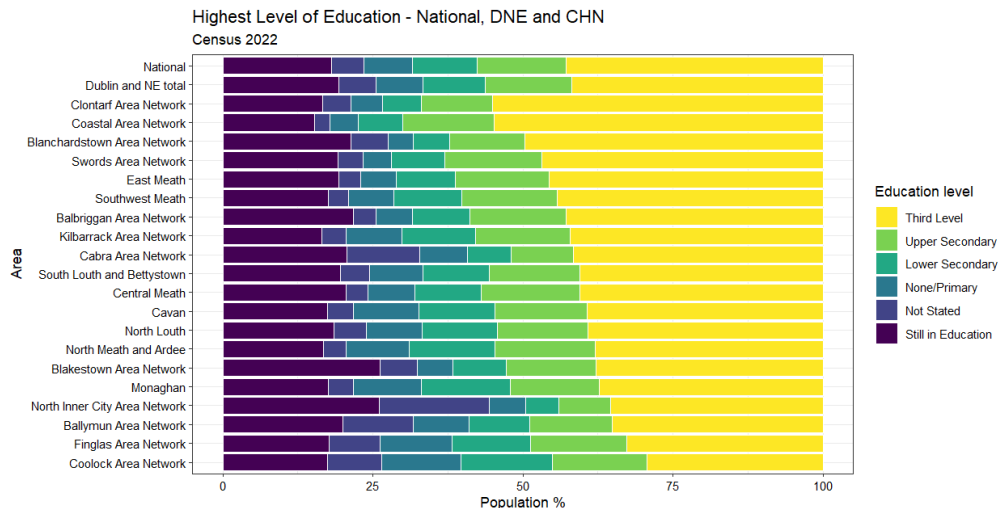




Carers – unpaid care



- Providing unpaid care is an important contribution to the welfare of individuals, families and society.
- The proportion of people providing unpaid care differs in the DNE region, with highest levels in the Coastal Area Network, the oldest CHN population.



Education is an important determinant of health and a strong relationship between education levels and health outcomes exists.

Higher levels of education benefit the individual and have positive effects for the economy and society.

- The proportion of population aged 15+ years with a third level education in DNE (41.8%) is slightly below the national average of 42.8%.
 - Ranges from 29.3% (Coolock) to 55.1% (Clontarf)
- Improving educational outcomes in the most disadvantaged groups has the potential to make a positive impact on health inequalities.



Regional Feedback

I didn't realise our population looked like this at all

A useful tool to inform decisions

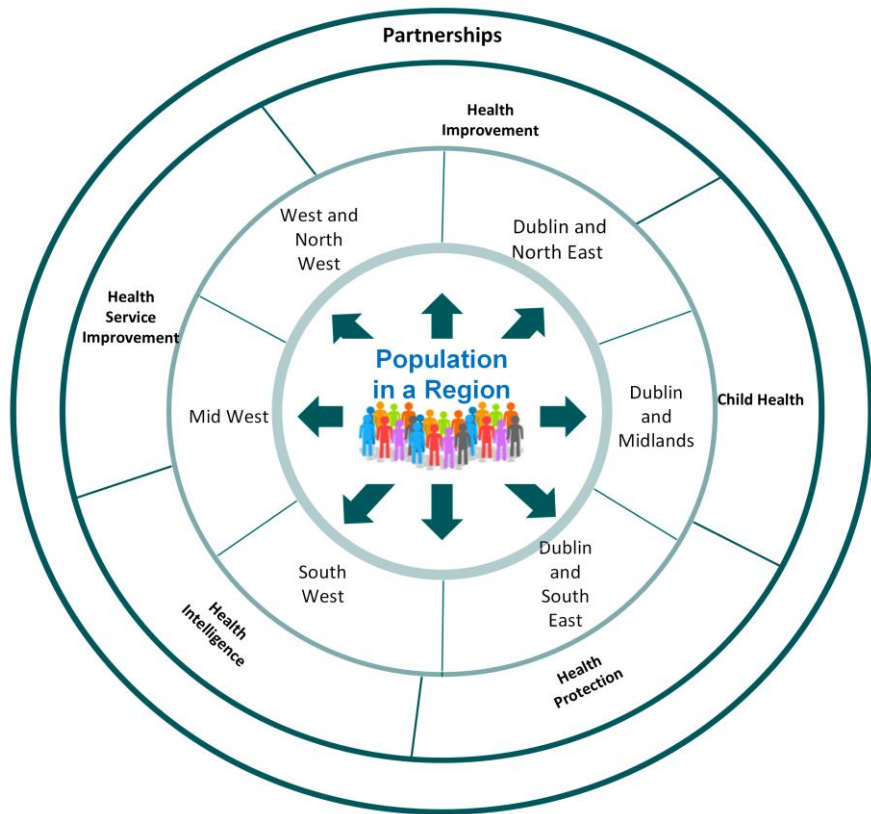
Really helpful for seeing where we should target

Having the webpage and CHN profiles is very useful

Really good to give context to local issues, for example vaccine uptake and deprivation



Summary



Thank You

Jennifer.martin@hse.ie

Declan.mckeown@hse.ie

Naomi.pettysaphon@hse.ie

Acknowledgements:

- Area Directors of Public Health and their teams
- PBP Steering Group including our Public and Patient Partners
- HSE Health Regions Implementation Team
- Department of Health – Statistical Analysis Unit

Profiles landing page (short URL):

<https://bit.ly/3QKH600>



Closing remarks



Summary of key points

1. Implementation of Health Regions
Programme continues
2. Population Based Planning focuses planning on the needs of the population working in partnership with local populations to further build on current profiles

Next steps

- Regional Executive Management team recruitment including IHA Managers
- Integrated Service Delivery Model development, including IHA design
- Ongoing stakeholder engagement and regular communication
- Health Regions Webinar Series continues in 2024



More information and support during the transition phase will be available in a number of ways:

Staff email updates, Health Matters
and HSE staff website

<https://healthservice.hse.ie/staff/>

HSE Health Regions information web
page

[https://www.hse.ie/eng/about/who/
health-regions/](https://www.hse.ie/eng/about/who/health-regions/)

If you have a question please contact
the

Health Regions team

healthregions.team@hse.ie